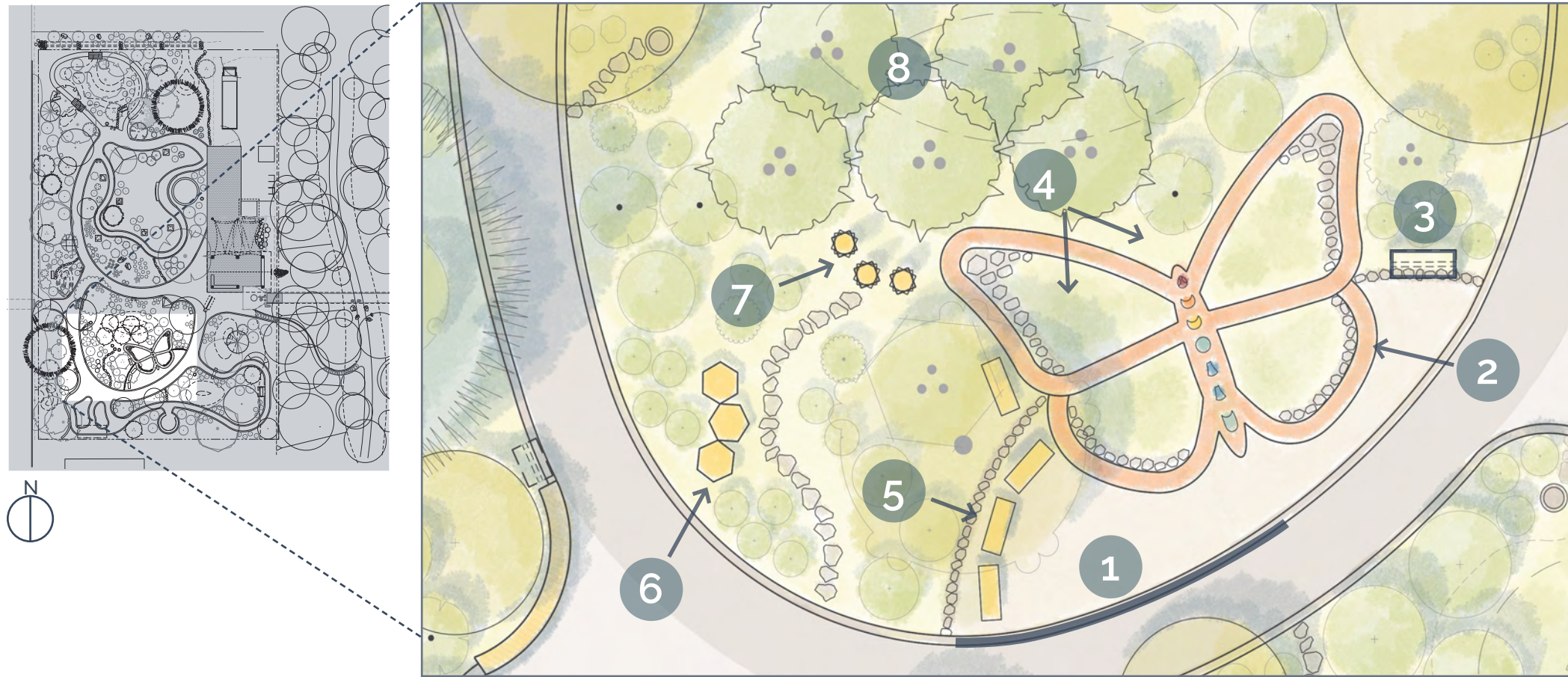


CHILDREN'S POLLINATOR GARDEN |



#6: Solitary Bee Habitat Garden in the Woods, MA



#6: Solitary Bee Habitat Phipps Conservatory, PA

- 1 Adjust the edge of the path so the entire butterfly is encompassed within the garden. Frame the south edge of the butterfly with a widened gravel zone edged with stone from the original form.
- 2 Pave the perimeter of the butterfly shape (18" wide path) with orange-hued flagstone to improve access and perception of the butterfly shape. Use stone from the original form to add detail to the monarch wings.
- 3 Add a *Garden Introduction* sign that shares the primary theme of the garden. Rename area "Children's Pollinator Garden."
- 4 Plant low-growing plants within the butterfly form. Plant tall pollinator plants outside the butterfly form.
- 5 Add two tile-topped benches in the same style as the existing bench to create a small gathering area for children's educational programs. If the original bench cannot be moved, adjust the placement of additional benches accordingly.
- 6 Incorporate a planting bed to the west and add a solitary bee habitat sculpture that can be monitored by children. (See examples to the right)
- 7 Create a hands-on interpretive display designed for children to learn about plant-pollinator relationships. (See examples on the following page)
- 8 Add or rearrange shrub plantings to reduce the linearity of the hedge to the north.