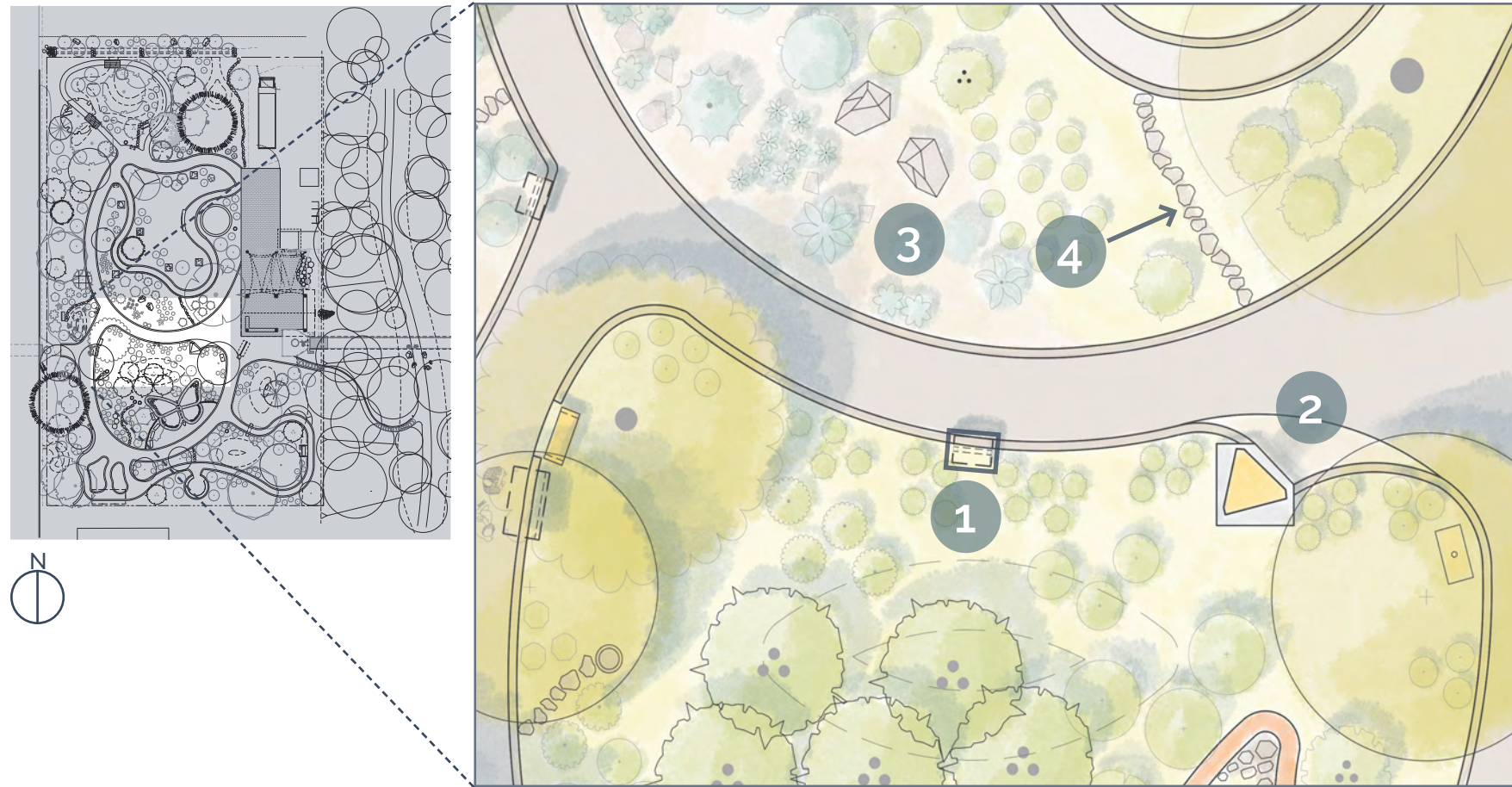


FRONT YARD GARDEN | RECOMMENDATIONS



- 1 Garden Introduction **interpretive sign** explaining the features of the new Front Yard Garden.
- 2 **Encompass the Tree of Life sculpture** inside the Front Yard Garden and leave a small gravel pathway/gathering area for guests to access the front of the sculpture.
- 3 Cactus & Succulents Garden on the opposite side of main path.
- 4 **Informal path** connecting the main path to the Chihuahuan Desert Grasslands loop.

The Front Yard Garden is a new display garden along the central spoke of the main path. This garden will showcase native plants that are excellent for home landscapes including wildflowers, showy perennials, and foundation plantings that look great year-round.

The Cactus & Succulents Garden on the opposite side of the path similarly shows arid-adapted plants that are easily grown at home.



Private Garden: Los Angeles, CA



Private Garden: Sacramento, CA