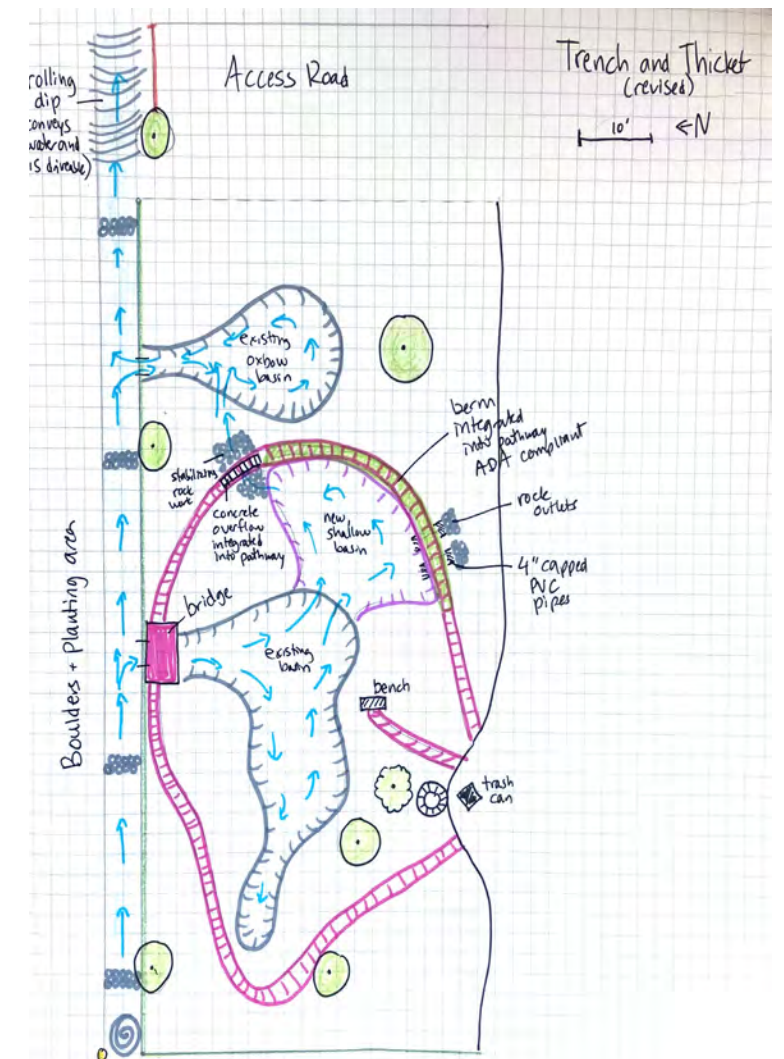


# HABITAT THICKET & RIPARIAN ALLEY



Sketch Plan by Stream Dynamics

The Bird Thicket is presently being designed and installed by the garden. A local company, Stream Dynamics, has developed a plan for slowing and directing water from State Street to the north of the garden to infiltrate into two connected basins within the space. This plan, therefore, approximates the intended design and the actual arrangement of basins, paths, and benches will be determined during installation. Descriptions of the proposed features follow.

- 1 Garden Introduction **interpretive sign** explains the purpose of the garden and hides the water spigot
- 2 **Loop path** navigates the edges of infiltration basins
- 3 **Dense plantings** throughout the garden provide ideal bird habitat

- 4 **Bridge crossing** over the inlet from the street with interpretation about rainwater harvesting efforts. Garden Feature signs at key points along the path can further interpret the earthworks and their functions.
- 5 Removal of invasive Siberian elms makes way for **open field** plantings to create insect habitats and hunting grounds for birds.
- 6 **Small bench** from which to birdwatch.