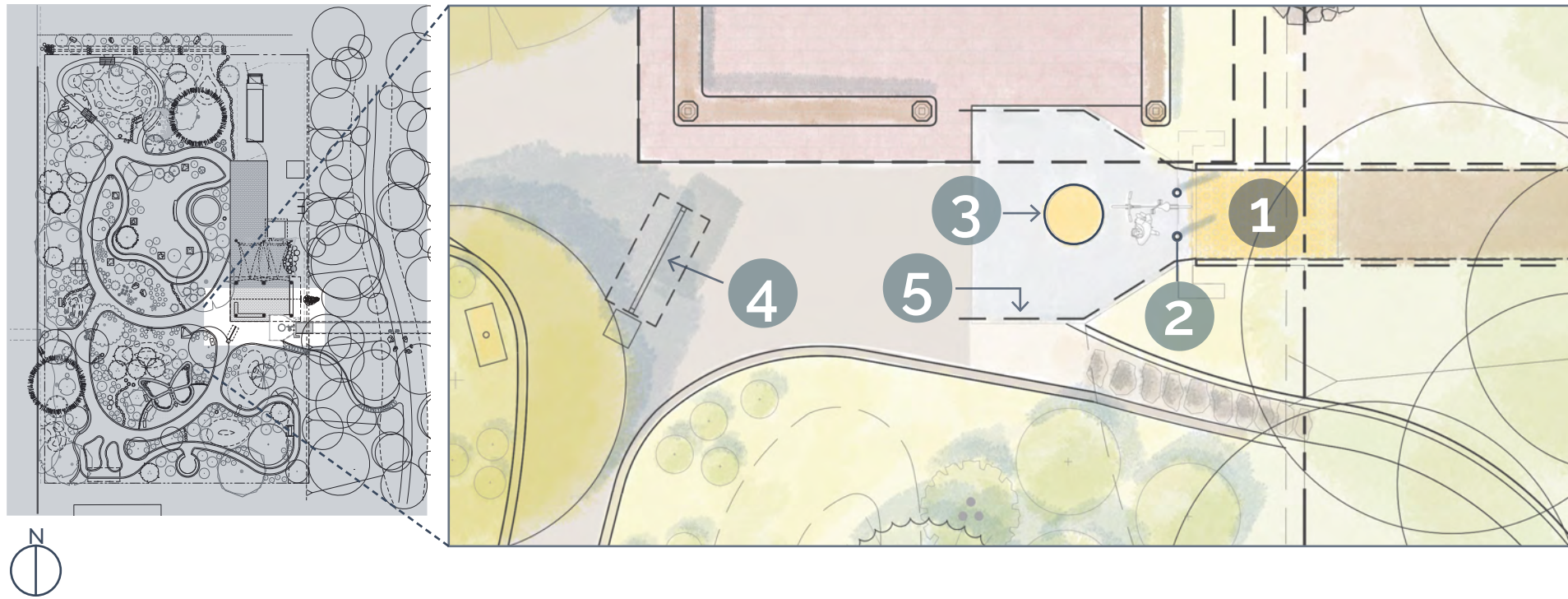


EAST ENTRANCE | RECOMMENDATIONS



- 1 10' long tactile warning strip or series of small **speed humps** in a bright color mounted directly onto the bridge will signal to cyclists to slow down.
- 2 Two **bollards** (3' h) placed 3'-4' apart provides an additional visual signal and a gentle physical signal for cyclists to dismount.
- 3 Signage asking cyclists to **dismount** painted directly on concrete pavement.
- 4 Rotate existing **kiosk** to **center of path** with a minimum of 3' clearance on all sides. The east-facing side will display the same map and orientation information as entry kiosk. The west-facing remains a bulletin.
- 5 A small sign mounted to both sides of the guard rail will notify guests entering from both the bridge and the creek of the **garden hours and rules**.



Image Credit: Jonathan Maus/BikePortland
Example of series of small speed bumps



Image Credit: emedco.com
Example of brightly painted bollards



Image Credit: Puputhin, *Reddit*
Example of friendly park rules sign